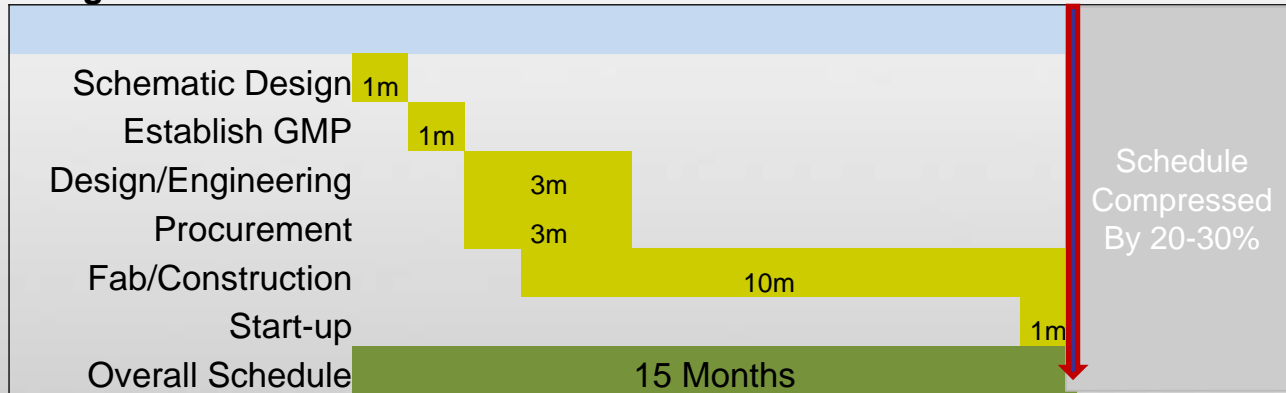


# SAMPLE SCHEDULE USING DESIGN-BUILD VS. TRADITIONAL



The design-build method effectively uses “fast tracking” to compress construction schedules, which generally reduces the entire process by 20-30 percent of the time required by the traditional design-bid-build method. In addition, a client has the ability to determine project costs within the first 2 months versus 6 months utilizing the design-build approach.

## Design-Build Solution



## Traditional Methods

